

Taylor & Francis Group  
Journals

# Taylor & Francis

## 新功能\*新服务



**CALIS**第十二届引进数据库培训周  
5月12-16日 @哈尔滨工业大学

[www.tandfonline.com](http://www.tandfonline.com)

## 主要内容包括：

↘ 公司简介

↘ T&F Online新功能新服务

\* 移动版新功能

\* **移动配置**

\* PC版新功能

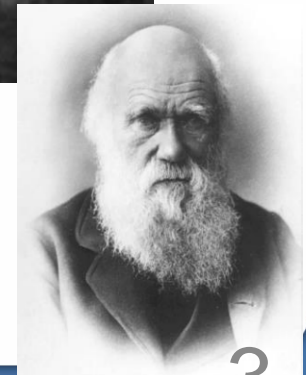
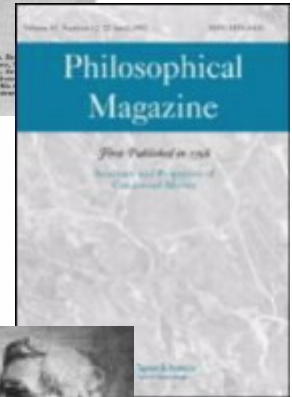
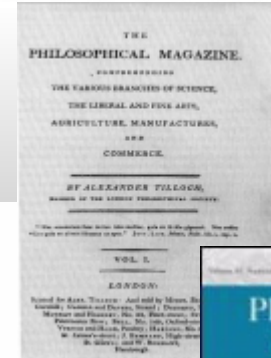
↘ 为读者带来的益处





# Taylor & Francis 公司简介

- 创建于**1798**年，出版**1800**余种学术期刊  
最早商业运作学术期刊的出版社  
1100+社会与人文科学期刊 / 400+科学技术期刊  
全球最大的社会科学出版社；**47%**的人文社科类期刊被**SSCI**收录；**80%**的科技类期刊被**SCI** 收录
- 合作伙伴 – 与**460**家学协会和大学合作；**2013**年新增**100**种期刊并有**54**家新的学协会加入
- 全球网络 – **20**家代表处遍布全球各大洲：北京、上海、新加坡、东京、牛津、费城、墨尔本
- 旗下品牌：



# 新功能 \* 新服务

移动版

**Taylor & Francis Online**

支持智能设备移动阅读



# Taylor & Francis Online 移动版新功能

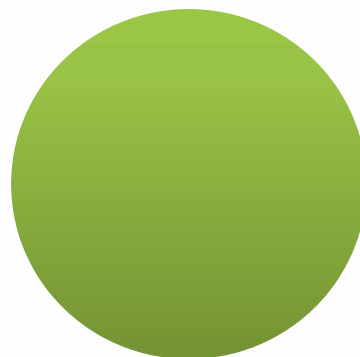
# Taylor & Francis Online

## PC版新功能

Google  
subscriber  
links



CrossMark



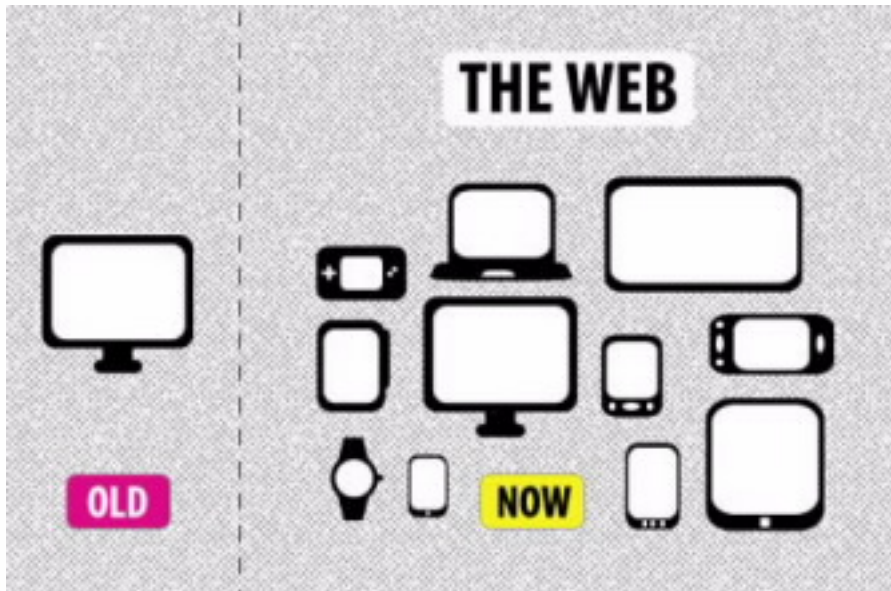
Toll-Free  
Link

更多引文来源



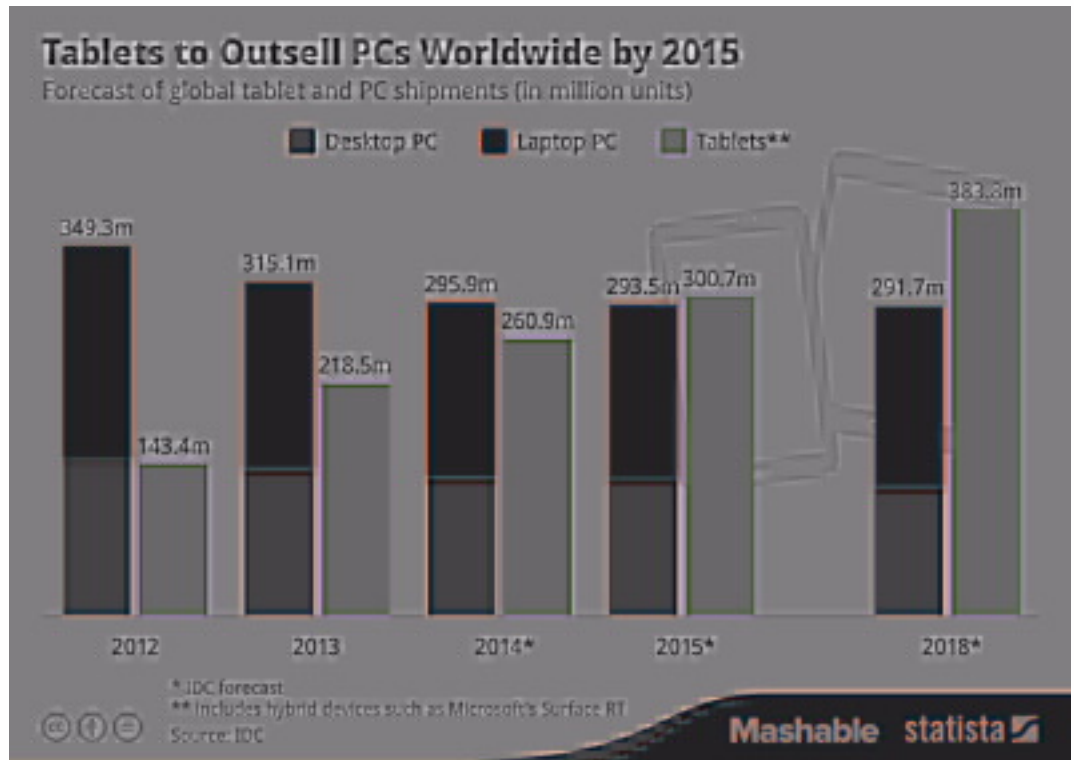
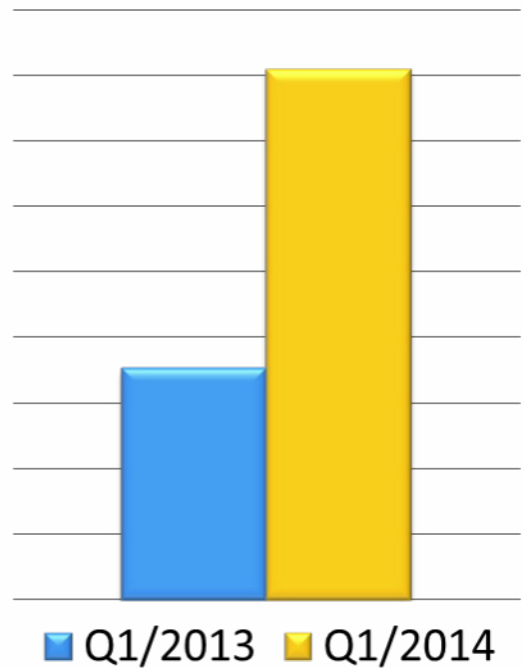
# Taylor & Francis Online 与科技发展同步

*The world is  
changing*



# Taylor & Francis Online 与科技发展同步

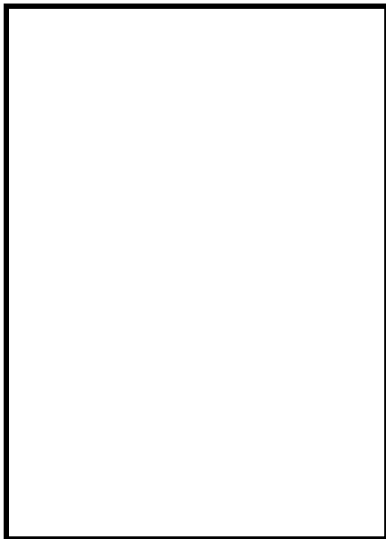
## 中国移动访问量 同期比较





# Taylor & Francis Online

## 移动版特点



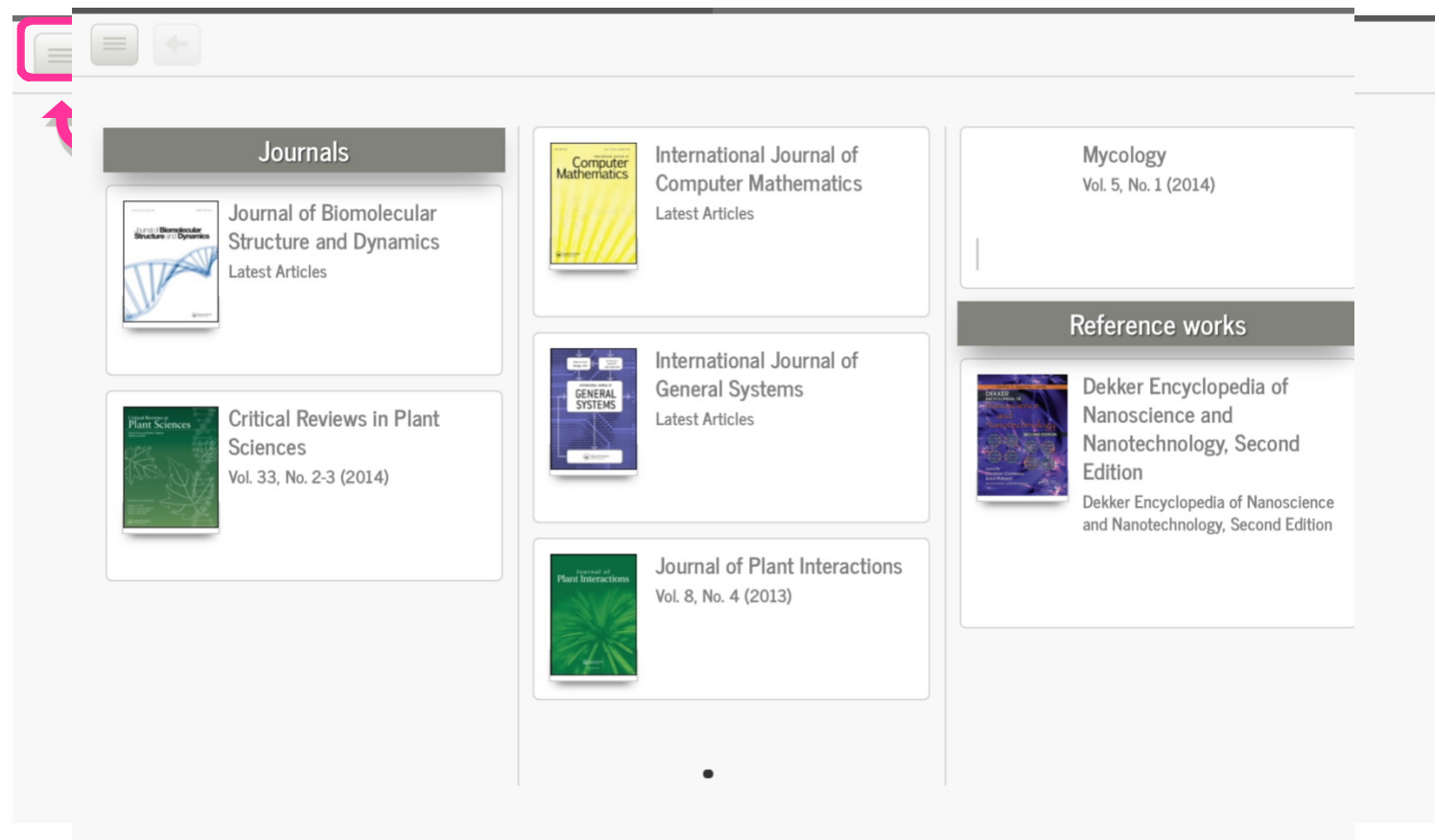
**访问便利性：** 无需下载安装任何应用程序，自动识别跳转至相应移动版本。

**系统适应性：** 支持黑莓、苹果和 安卓系统的智能移动设备

**产品一致性：** 移动版提供的产品与PC版一致，移动版与PC版可以随时转换

# Taylor & Francis Online

## 移动版新功能



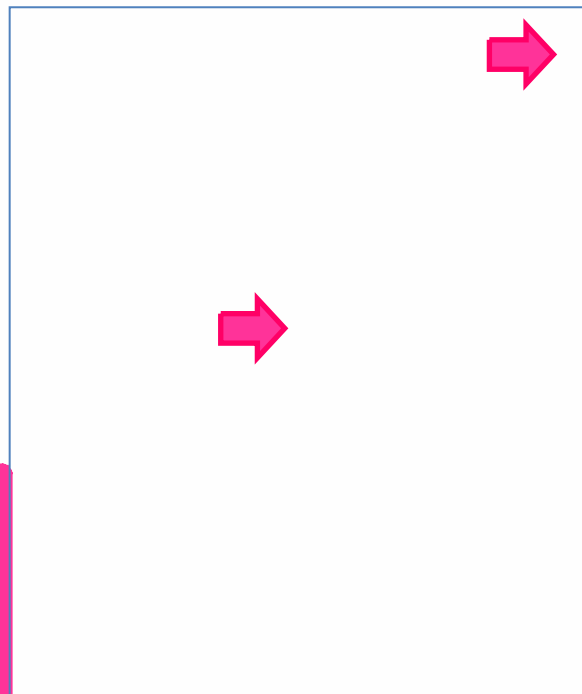
# Taylor & Francis Online

## 移动版新功能

优化搜索

丰富信息  
移除横幅

OA列表



- 关键词
- 内容类型
- 作者
- 出版时间

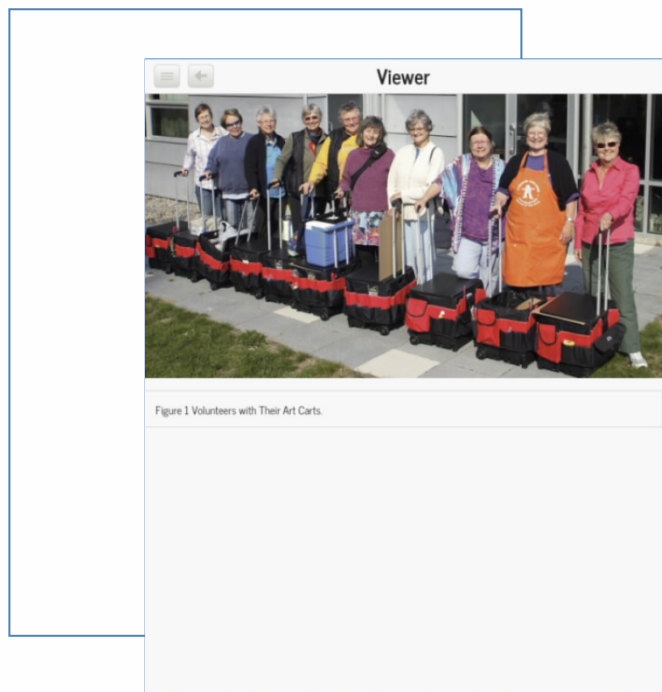
# Taylor & Francis Online

## 移动版新功能

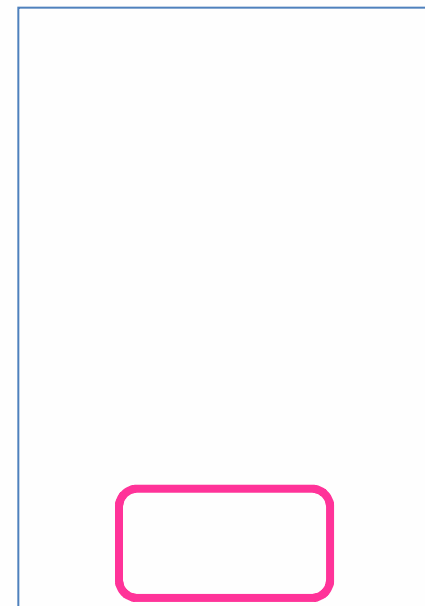
引文列表



全幅图表



内置购买



# 移动配置

**Taylor & Francis Online**  
支持智能设备移动阅读

# Taylor & Francis

## 移动设备配置

支持**Blackberry**、**Apple** 和 **Android** 应用系统

**有WiFi的情况下配置：**

开启移动设备进行自动配置

**无WiFi的情况下配置：**

在机构IP 范围内的终端登录**T&F Online**配置移动设备配置码在**5分钟**之内需输入移动设备；

**移动设备与您的帐户绑定，配置180天内有效**



# Taylor & Francis

## 移动设备配置



Tap here to start navigation.

移动版导航菜单



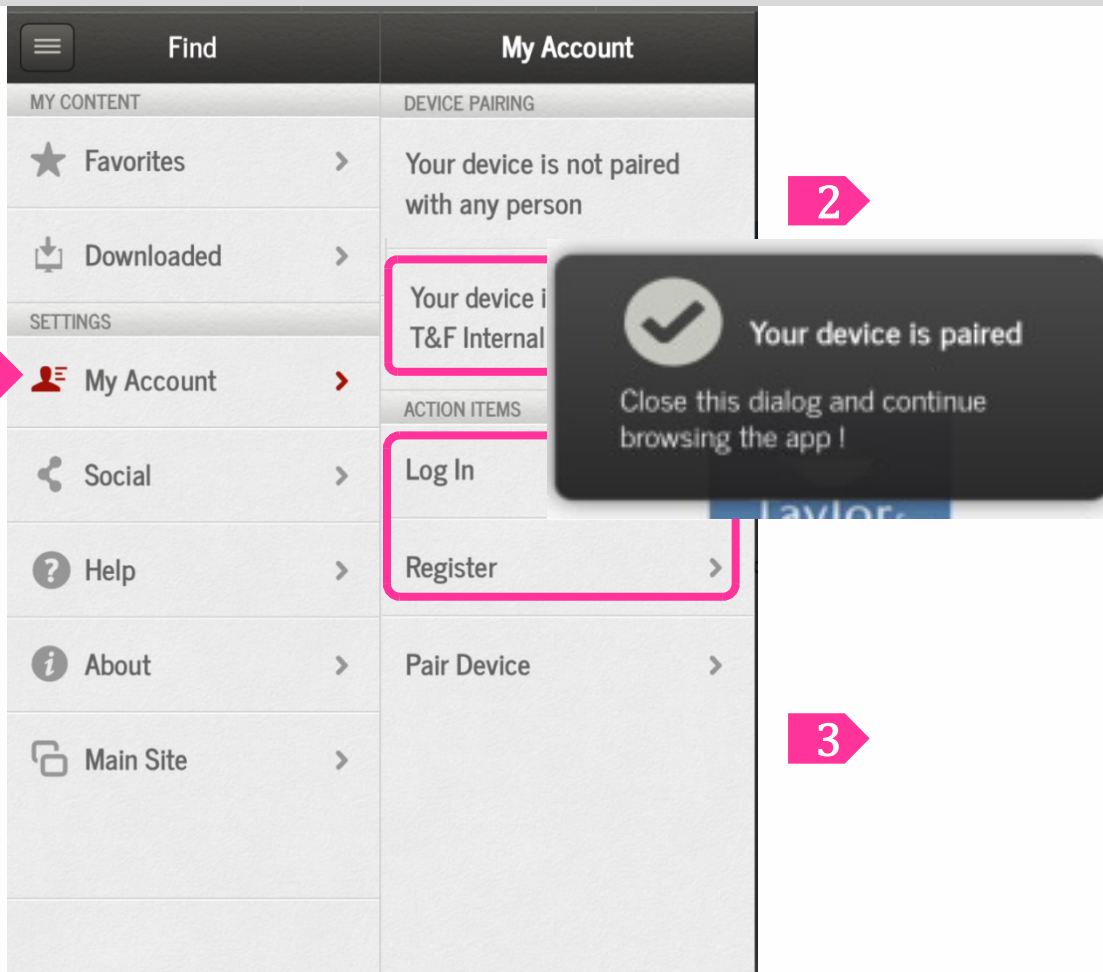
Customize your home screen

Taylor & Francis © 2014

# Taylor & Francis

## 移动设备配置

用户在机构有WiFi的情况下：



导航菜单：

1. My Account 在IP范围内访问自动识别；
2. 有T&F Online 账号直接登录
3. 没有T&F Online账号，直接注册

# Taylor & Francis

## 移动设备配置

用户在机构无WiFi的情况下:

在机构电脑终端, 登录Taylor & Francis Online主页  
[www.tandfonline.com](http://www.tandfonline.com)

点击Mobile



Register | Sign in | **Mobile** | Librarians | Authors & Editors | Societies

Home | Browse | Products | Open access | Shortlist | Cart

The online platform for Taylor & Francis Group content



Search

Advanced and citation search

### Browse by subject

» Area Studies (146)

» Arts (79)

» Behavioral Sciences (262)

» Bioscience (98)

» Built Environment (78)

» Communication Studies (53)

» Computer Science (71)

» Development Studies (75)

» Education (252)

» Engineering & Technology (275)

» Environment & Agriculture (197)

» Environment and Sustainability (115)

» Food Science & Technology (29)

» Geography (133)

» Health and Social Care (143)

» Humanities (779)

» Law (51)

» Mathematics & Statistics (96)

» Museum and Heritage Studies (11)

» Physical Sciences (157)

» Politics & International Relations (211)

» Social Sciences (228)

» Sports and Leisure (58)

» Tourism, Hospitality and Events (78)

# Taylor & Francis

## 移动设备配置

### Taylor & Francis Online Mobile

To access your organization or society's content from your mobile device and take knowledge on the move, pair your device as follows:

1. If you have an account, enter your user name and password below. If you are a new user, you will need to register by entering your email address details below.
2. Click Obtain passcode and make a note of the case-insensitive pairing code that displays, which is valid for 5 minutes.
3. Visit the site on your mobile device, tap the Settings icon, and select the Device Pairing option.
4. Enter the pairing code and tap Verify Code.

Your mobile device will be permanently linked with your account. It will also be paired with your organization for 180 days, after which you will need to pair your mobile device again.

#### Registered Users

已有账户  
直接登录

Email address \*

Password \*

[Forgot password](#)

Sign In

#### New Users

新用户在此注册

Email address \*

Confirm email address \*

First Name \*

Last Name \*

Country \*

Select a Country



Password \*

\* fields are compulsory

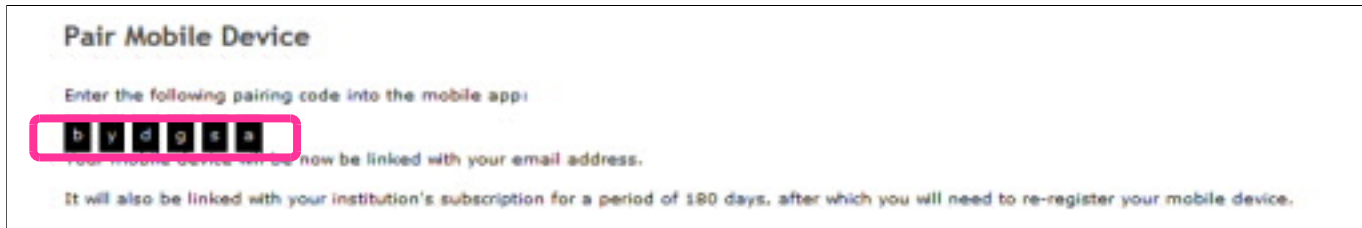
若已有T&F之账号,可直接登入;  
没有账号,也可在此页面直接做免费注册

Obtain pairing code

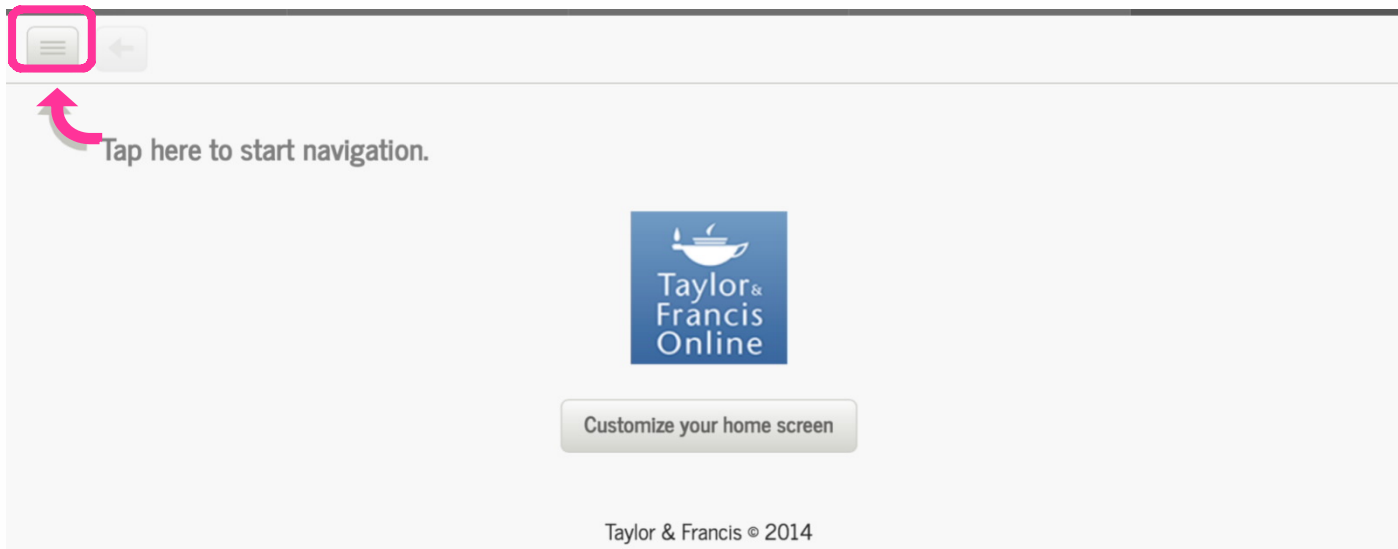
# Taylor & Francis

## 移动设备配置

登录后得到随机配置码，需**5分钟**之内配置到智能移动设备



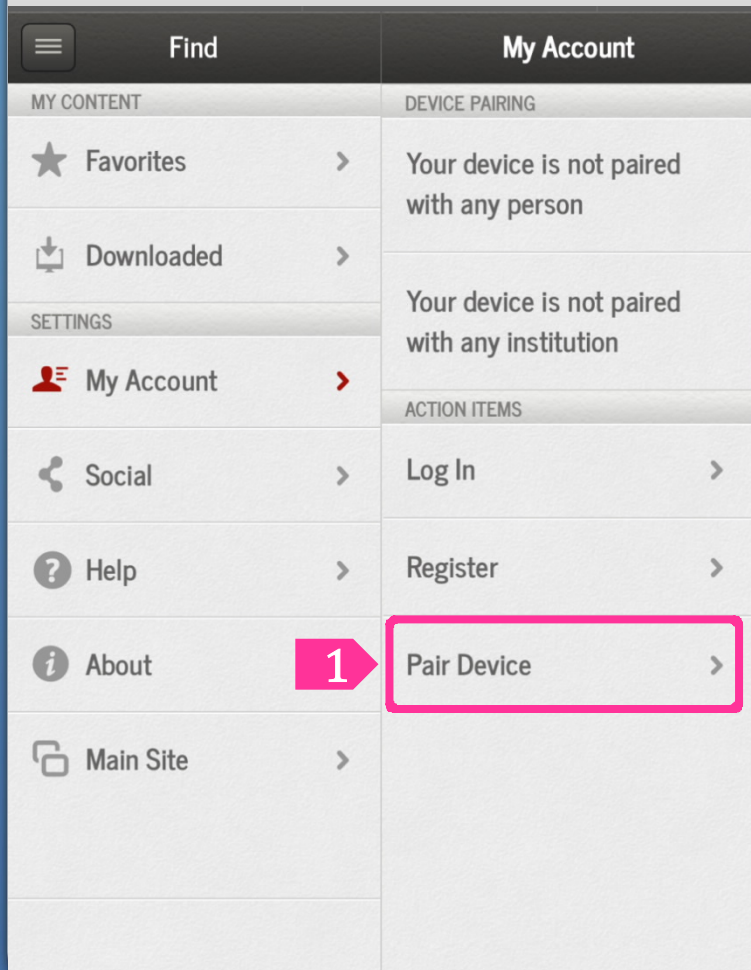
用**智能移动设备**登录**T&F Online**，自动显示为移动版，也可转至**Full Site**



# Taylor & Francis

## 移动设备配置

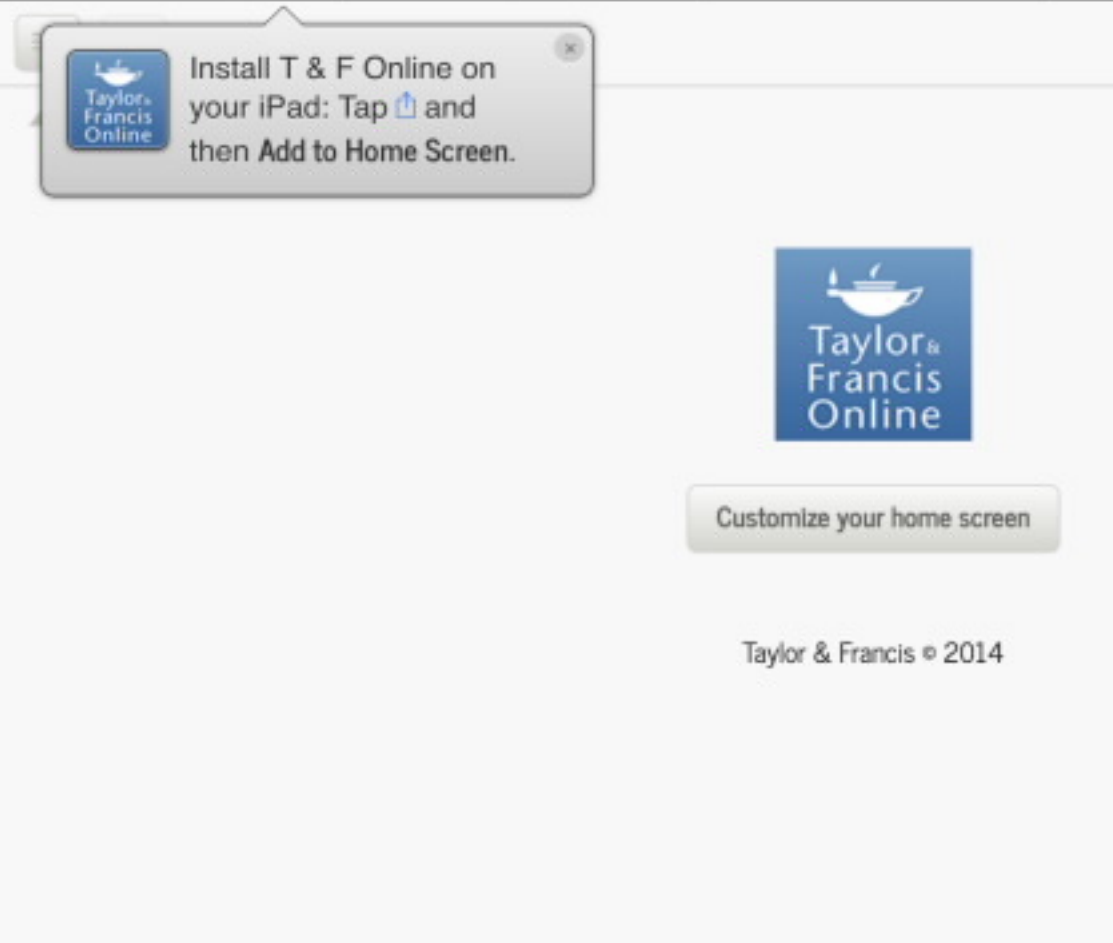
用户在机构无WiFi的情况下：





# Taylor & Francis

## 添加快捷方式到桌面



### 添加T&F Online 快捷方式到主屏幕:

第1步: IOS设备经由safari  
浏览器打开主页后根据提示  
点击相应按钮;

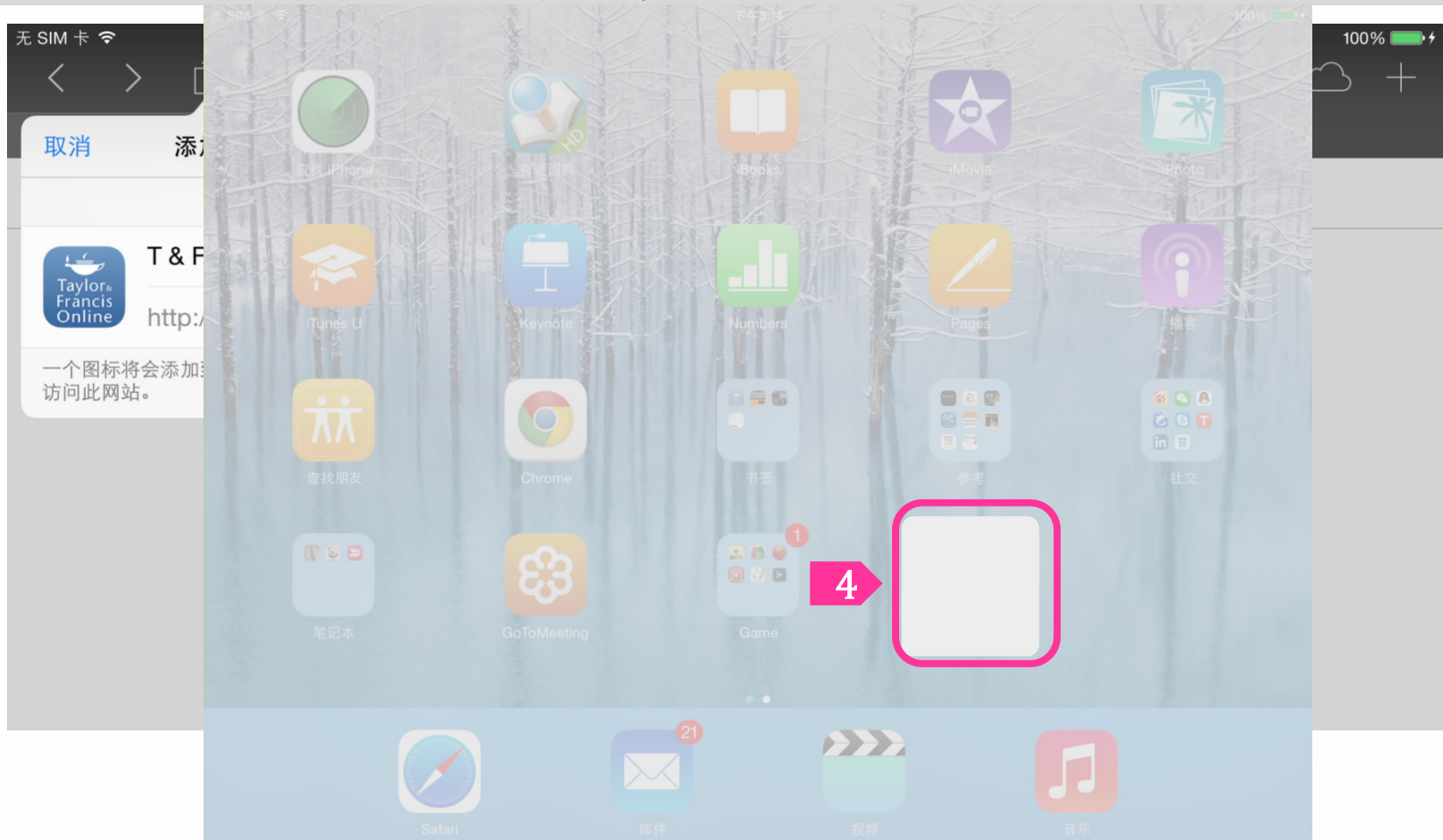
第2步: 点击添加至主屏幕;

第3步: 确认快捷方式  
名称后单击添加按钮;

第4步: 回到主屏幕  
可以看到T&F Online的图标.

# Taylor & Francis

## 添加快捷方式到桌面



# 新功能 \* 新服务

PC版

**Taylor & Francis Online**

帮助读者发现、利用资源

# Taylor & Francis Online

## 新功能介绍 - CrossMark

The screenshot shows the Taylor & Francis Online interface. At the top, there's a navigation bar with 'Welcome Geeta: My Account | Sign out | Mobile | Librarians | Authors & Editors | Societies'. Below that is a search bar and a 'Search' button. The main content area displays the article 'Reducing cultural and psychological barriers to Latino enrollment in HIV-prevention counseling: Initial data on an enrollment meta-intervention' from 'AIDS Care: Psychological and Socio-medical Aspects of AIDS/HIV', Volume 25, Issue 7, 2013. A large green checkmark is overlaid on the article title and abstract area. The abstract text reads: 'Aspects of Latino culture (e.g., machismo, marianismo) can act as barriers to enrollment in HIV-prevention programs. To lift these barriers, a culturally appropriate meta-intervention was designed to increase intentions to enroll in HIV-prevention counseling by Latinos. Latino participants (N=21) were recruited from...'



权威认证  
&  
出版记录

CrossMark STATUS RECORD

**This document is current.**  
Future updates — if any — will be listed below.

CrossMark STATUS RECORD

**Updates are available for this document.**

# Taylor & Francis Online

## 新功能介绍 - Toll Free Link

**Information** **Full text**

**Article A**  
• User has subscription/article is OA

*Article B is listed in references for Article A*

**Article B**  
• User doesn't have a subscription but can access full text via TFL

1. C. Castillo-Chavez a... 128(1-2) (1995), pp. 299-316. [Web of Science @], [CSA]

2. W.J. Edwards and C.T. Edwards, *Population limiting factors*, *Natu* (2011). Available at <http://www.nature.com/scitable/knowledge/li-17059572>.

3. K.P. Hadeler, *Pair formation in age structured populations*, *Acta Ap* 102. doi: 10.1007/BF00046676 [CrossRef], [PubMed], [Web of S

4. K.P. Hadeler, R. Waldstätter, and A. Wörz-Busekros, *Models for populations*, *J. Math. Biol.* 26 (1988), pp. 635-649. doi: 10.1007/[PubMed], [Web of Science @]

5. M. Iannelli, M. Martcheva, and F.A. Milner, *Gender-structured po methods, numerics and simulations*, SIAM, Philadelphia, PA, April 2

6. D. Maxin and F.A. Milner, *The role of sexually abstained groups in epidemic logistic models with non-linear mortality*, *J. Theor. Biol.* 251 10.1016/j.jtbi.2008.08.027 [CrossRef], [PubMed], [Web of Scien

7. D. Maxin, L. Berec, M. Covello, J. Jessee, and M. Zimmer, *The groups on persistence of sexually transmitted infections in populations* *Theor. Biol.* 292 (2012), pp. 1-10. doi: 10.1016/j.jtbi.2011.09.00

8. F.A. Milner and K. Yang, *The logistic, two-sex, age-structured pop* (2009), pp. 252-270. doi: 10.1080/17513750802283261 [Taylor

9. P.F. Verhulst, *Notice sur la Loi que la Population suit dans son Acc* mathématique et physique publiée par A. Quételet, Brussels, X (

**CrossMark**  
click for updates

**On geometric properties of spherical conics and generalization of  $\pi$  in navigation and mapping**

**DOI:** 10.3846/20296991.2012.756995  
**Piotr Kopacz\***  
pages 141-151

**Publishing models and article dates explained**  
Received: 18 Oct 2012  
Accepted: 12 Dec 2012  
Published online: 21 Dec 2012

**Article Views:** 37

**You have free access to this article via Toll Free Linking**

**Preview**  
**Access Options**

**Alert me**



# Taylor & Francis Online

## 新功能介绍 - 更多引文来源

The screenshot shows the journal page for 'Work & Stress: An International Journal of Work, Health & Organisations', Volume 25, Issue 1, 2011. The main article is 'Exposure to psychological aggression at work and job performance: The mediating role of job attitudes and personal health'. The page includes a 'Citing Articles' section with a pink box highlighting 'CrossRef (3)', 'Web of Science (4)', and 'Scopus (4)'. Another pink box highlights the 'Citing Articles' section header. A third pink box highlights the 'Citing Articles' section content, which lists 'CrossRef (3)', 'Web of Science (4)', and 'Scopus (4)'. The page also features a 'Log in' section, 'Purchase options' (Issue Purchase: GBP 113.00, Permanent access to this issue: GBP 113.00, Article Purchase: GBP 22.50), and a 'Citing Articles' section with a pink box highlighting the 'Citing Articles' section header.



# Taylor & Francis Online

## 新功能介绍 – DataCite、Google subscriber links

**Abstract**

Sixty hours of direct measurements of fluorescence were collected from six bowhead whales (*Balaena mysticeta*) instrumented with fluorometers in Greenland in April 2005 and 2006. The data were used to (1) characterize the three-dimensional spatial pattern of chlorophyll-*a* (Chl-*a*) in the water column, (2) to examine the relationships between whale foraging areas and productive zones, and (3) to examine the correlation between whale-derived in situ values of Chl-*a* and those from concurrent satellite images using the NASA MODIS (Moderate Resolution Imaging Spectroradiometer) EOS-AQUA satellite (MOD21, SeaWiFS analogue OC3M and SST MOD37). Bowhead whales traversed 1600 km<sup>2</sup>, providing information on diving, Chl-*a* structure and temperature profiles to depths below 200 m. Feeding dives frequently passed through surface waters (>50 m) and targeted depths close to the bottom, and whales did not always target patches of high concentrations of Chl-*a* in the upper 50 m. Five satellite images were available within the periods whales carried fluorometers. Whales traversed 91 pixels collecting on average 761 s (SD 826) of Chl-*a* samples per pixel (0–136 m). The depth of the Chl-*a* maximum ranged widely, from 1 to 66 m. Estimates of Chl-*a* made from the water-leaving radiance measurements using the OC3M algorithm were highly skewed with most samples estimated as <1 mg m<sup>-3</sup> Chl-*a*, while data collected from whales had a broad distribution with Chl-*a* reaching >9 mg m<sup>-3</sup>. The correlation between the satellite-derived and whale-derived Chl-*a* maxima was poor, a linear fit explained only 10% of the variance.

 [View full text](#)  [Download full text](#)  [Links to associated data](#)

**Keywords**

Bowhead whale, chlorophyll-*a*, fluorometer, MODIS, n

**Related articles**

[View all related articles](#)

     [Add to shortlist](#)  [Link](#)  [DOI](#)

**Links to associated data**

1. PANGAEA - Data Publisher for Earth & Environmental Science
2. PANGAEA - Data Publisher for Earth & Environmental Science
3. PANGAEA - Data Publisher for Earth & Environmental Science

Google  
subscriber links

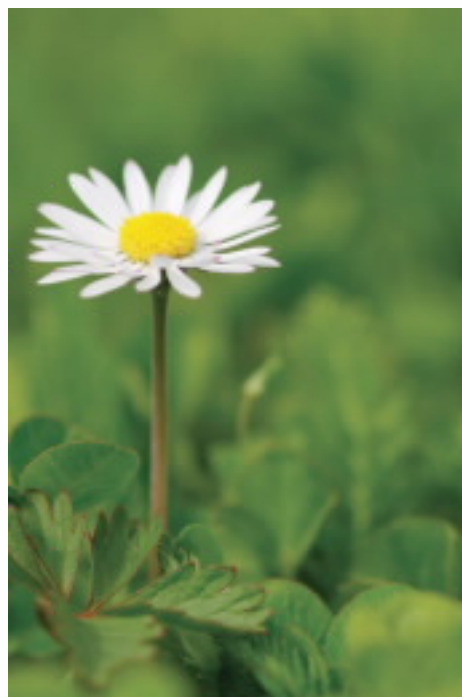


# 新功能 \* 新服务

为研究人员、读者、图书馆员  
提供全方位的支持

# Taylor & Francis

## 研究人员、图书馆员的朋友



欢迎参加 Taylor & Francis 培训  
5月15日 11:25-12:05  
哈工大二校区图书馆电子阅览室212

